

Dornbracht LifeSpa

Sales Presentation Aquamoon (Rainmoon, Aquamoon, Aquamoon^{ATT})

Agenda

- Dornbracht LifeSpa
 - Healthness
 - Pillars
 - Product portfolio
- Aquamoon family
 - Design
 - Flow modes
 - Overview
 - Portfolio classification
 - Product range structure
 - Product range
- Rainmoon
- Aquamoon
- Aquamoon^{ATT}
 - Signature Treatments
 - Fragrance
 - Control elements
 - Factsheet
 - Product range structure
- FAQs
- Timing
- Communication



healthy food



enough sleep



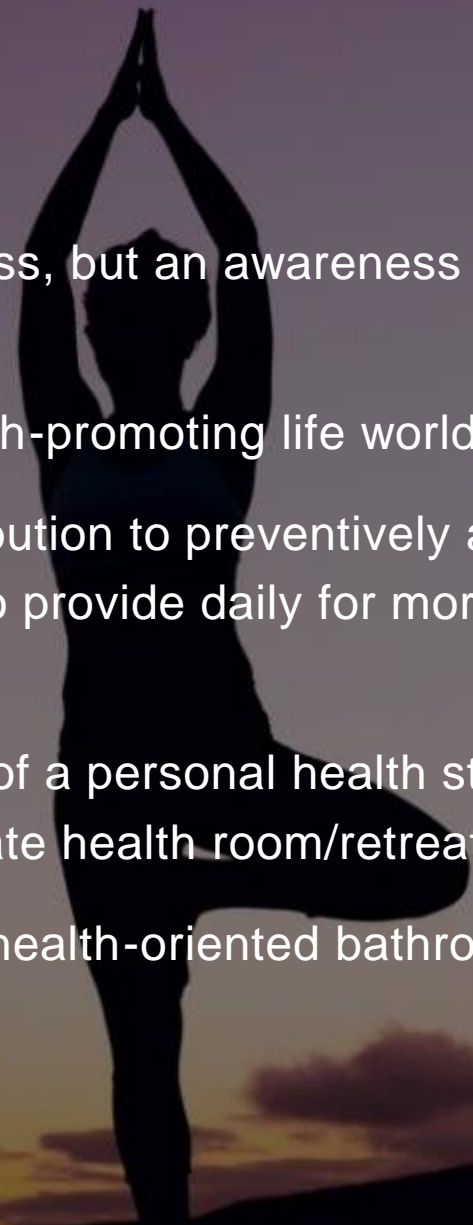
regular exercise



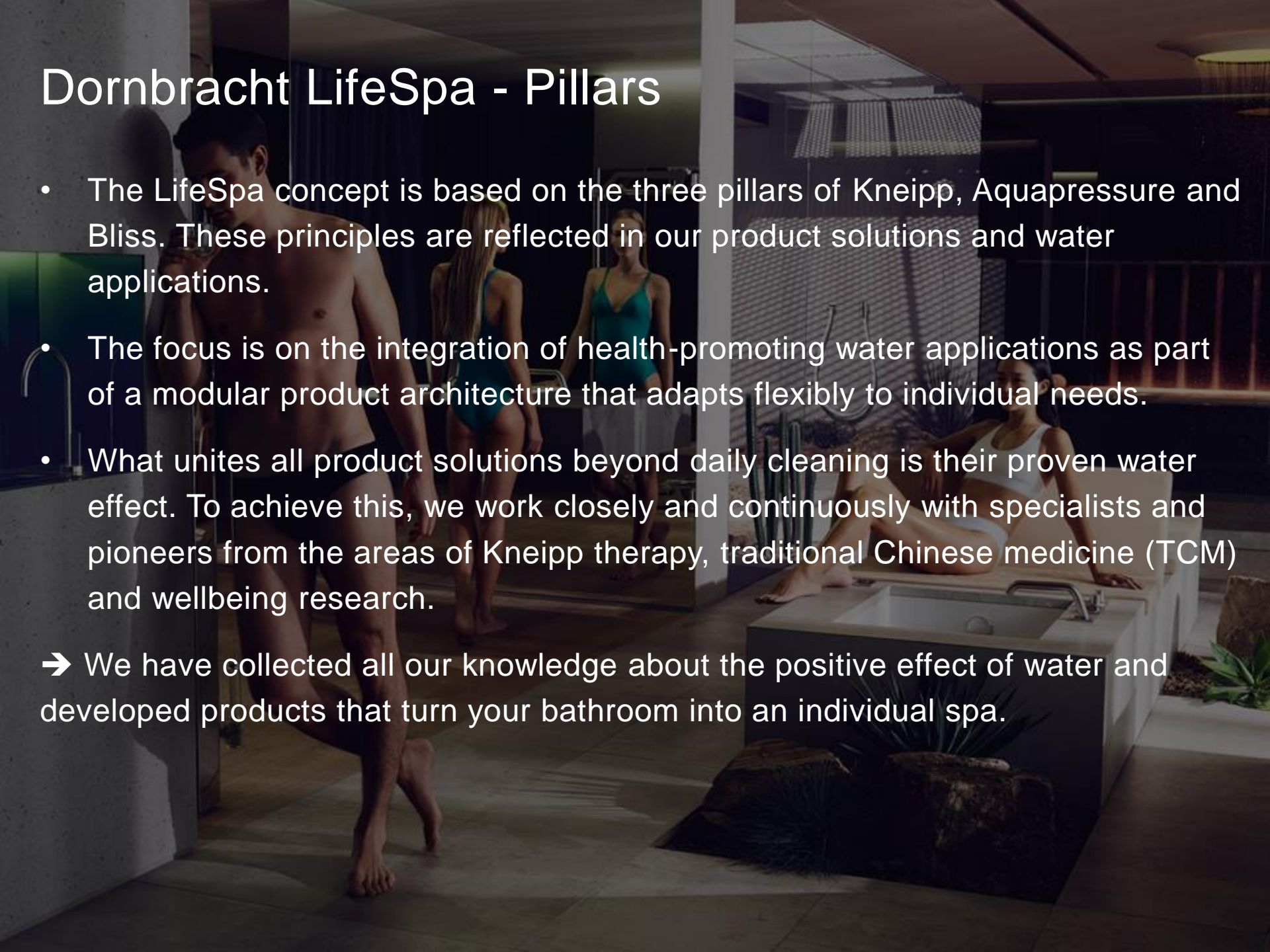
personal retreats

Dornbracht LifeSpa – Healthness

- Health no longer means just the opposite of illness, but an awareness of the balance of individual life energy.
 - Health-conscious people want to move into health-promoting life worlds.
 - Water applications can make a significant contribution to preventively and actively strengthening personal health. They also provide daily for more balance, well-being and life energy.
 - The bathroom offers space for the development of a personal health strategy and is increasingly transforming itself into a private health room/retreat.
- ➔ With LifeSpa, Dornbracht is taking the idea of a health-oriented bathroom design to a new level.

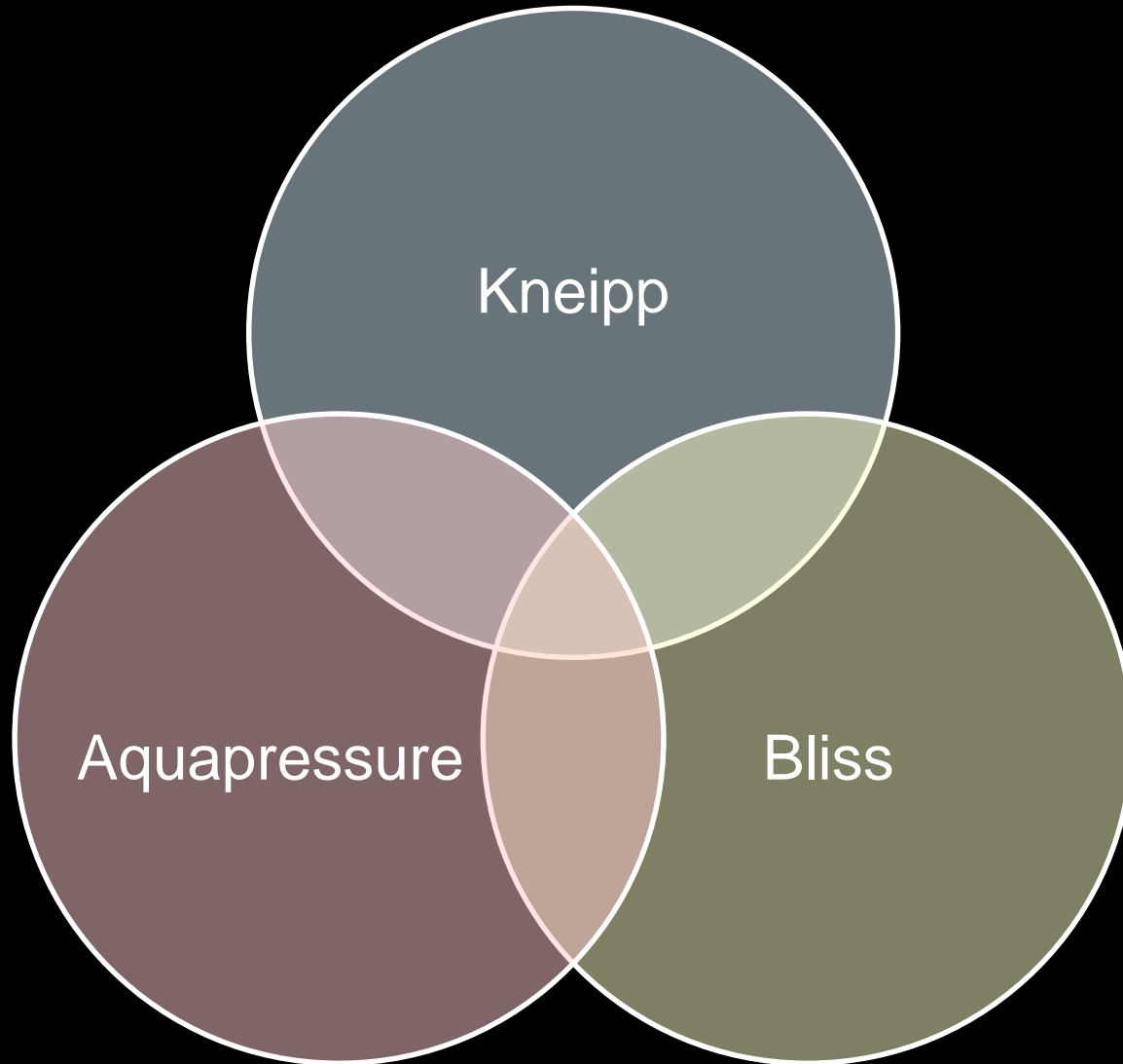


Dornbracht LifeSpa - Pillars

A modern bathroom scene with people using various water features. In the foreground, a man in black briefs stands near a shower. In the background, two women in teal swimsuits are near a shower. To the right, a woman in a white bikini sits on a large, dark, rectangular stone bathtub. The room has large windows with blinds and modern lighting.

- The LifeSpa concept is based on the three pillars of Kneipp, Aquapressure and Bliss. These principles are reflected in our product solutions and water applications.
 - The focus is on the integration of health-promoting water applications as part of a modular product architecture that adapts flexibly to individual needs.
 - What unites all product solutions beyond daily cleaning is their proven water effect. To achieve this, we work closely and continuously with specialists and pioneers from the areas of Kneipp therapy, traditional Chinese medicine (TCM) and wellbeing research.
- ➔ We have collected all our knowledge about the positive effect of water and developed products that turn your bathroom into an individual spa.

Dornbracht LifeSpa - Pillars



Dornbracht LifeSpa - Pillars

Kneipp

- A holistic therapy that brings body, mind and psyche into harmony through targeted temperature stimuli (hot/cold) and above all focuses on prevention.
- The various Kneipp applications range from affusions and washes to baths and footbaths.
- The affusions have a calming, relaxing or stimulating effect.

Dornbracht LifeSpa - Pillars

Aquapressure

- Aquapressure refers to the targeted massage of pressure points, tense muscles or tendons through water pressure.
- This new method was developed by Dornbracht and is based on the principles of acupuncture.
- This has proven itself in Traditional Chinese Medicine (TCM) and is used to release blockades and solve imbalances in a targeted way.

Dornbracht LifeSpa - Pillars



Bliss

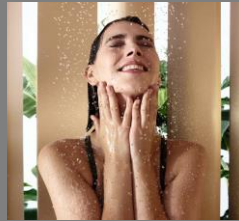
- The Bliss experience represents the top of the wellness range in terms of mental health.
- Bliss = happiness, a deep feeling of arrival
- A feeling of inner happiness, with peace and deep relaxation at the same time.

Dornbracht LifeSpa – Product portfolio

Spa Modules



Spa Solutions





"We need personal safe havens where we experience moments of happiness. The harmonious interplay of water, light and fragrance creates this feeling of happiness, the moment of bliss, which makes sensations such as relaxation, revitalisation and security a sensual experience."

Product designer Michael Neumayr

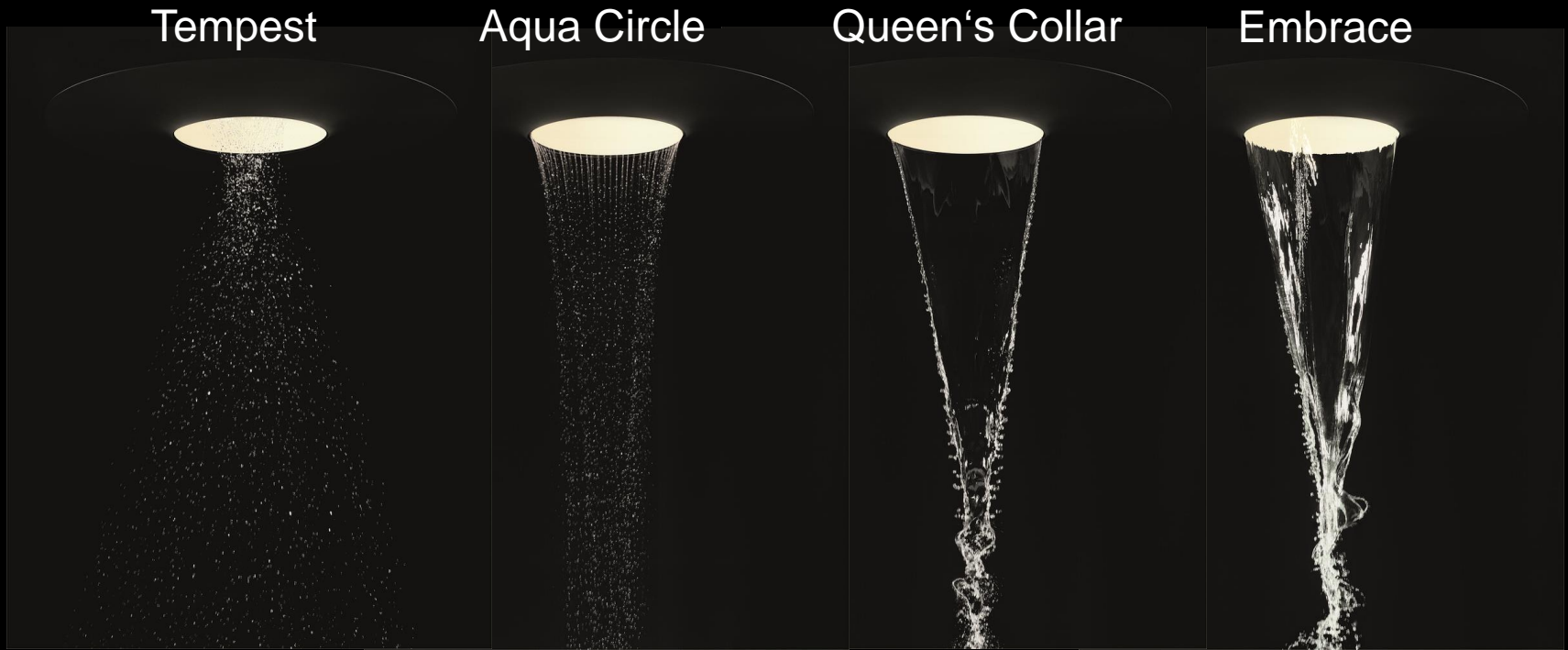


Water, Light, Energy

Aquamoon - Design

- With its reduced form, AQUAMOON blends seamlessly and almost invisibly into the bathroom architecture.
- The central element is a dome set into the ceiling. If you look up into the dome, you get an extraordinary sense of depth: a hidden light strip inside the hemisphere creates the perfect mood lighting, inspired by moonlight, and give a sense of infinity.
- All joints are reduced to a minimum.
- The colour is optimally adapted to the ceiling colour (other colours also possible).

Aquamoon – Flow modes



Natural rain feeling

Natural waterfall feeling

Aquamoon - Design





TEMPEST

- Large, particularly soft drops, which are reminiscent of the nature experience of a stormy rain shower
- The type of flow mode does not follow any logic, but the nature of the water
- Thunderstorm rain that provides relaxation and refreshment



AQUA CIRCLE

- Soft water funnel
- The more water, the smaller the cone and the more powerful the flow mode.
- With less water, the cone increases in size, leaving the head clear, and the water falls on your shoulders like a rain curtain.
- Relaxing and meditative effect



QUEEN'S COLLAR

- Semi-circular surge of water reminiscent of a waterfall
- The water jet massages the head, shoulder and spine area.
- For a soothing and relaxing or invigorating and refreshing effect
- Varying intensity depending on the body part



EMBRACE

- Water envelops the body - the head stays clear
- Intensive experience of security and relaxation
- The stress of everyday life is faded out and you focus solely on yourself
- The intensity of the cascade varies according to the body part

Aquamoon family - overview

Rainmoon



- 2 flow modes: Tempest, Aqua Circle
- Moonlight
- Concealed thermostat

Aquamoon



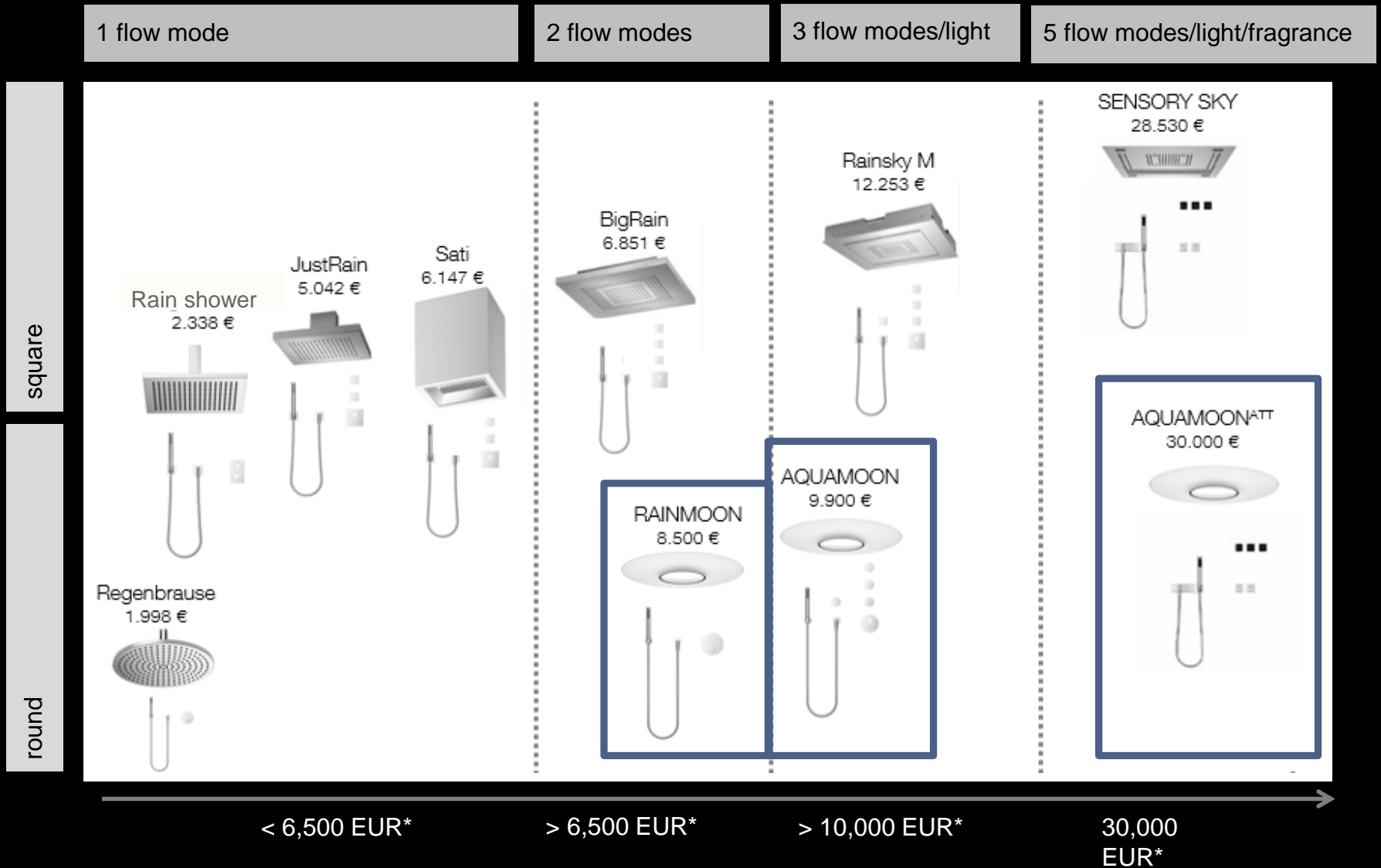
- 3 flow modes: Tempest, Aqua Circle, Queen's Collar
- Moonlight
- xTool

Aquamoon^{ATT}



- 4 flow modes: Embrace (optional), Tempest, Aqua Circle, Queen's Collar
- Coloured light
- Signature Treatments
- Smart Tools

Aquamoon family - Portfolio classification



* Prices DAT BLP

Aquamoon family - Product range structure

	Size	Flow modes				Light	Frau-grance	Signatur e Treat- ments	Connec- tivity	Control elements	Hand shower
		Aqua- circle	Tempest	Queen's Collar	Embrace						
Aquamoon ^{ATT}	450 mm	x	x	x	(x) optional acces- sories package	coloured	x	x	x	Smart Tools	x
Aquamoon	450 mm	x	x	x		plain				X-Tool	x
Rainmoon	450 mm	x	x			plain				Concealed thermostat 3-way	x

Aquamoon family - Product range

Overview AQUAMOON Family



RAINMOON with round rosettes

- Chrome
- Platinum Matt



AQUAMOON with round rosettes

- Chrome
- Platinum Matt



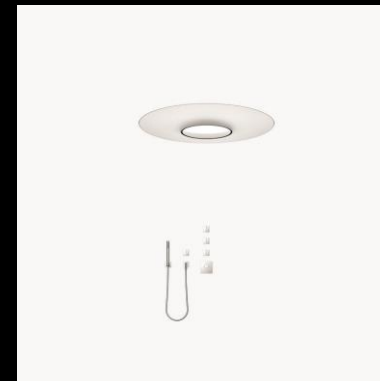
AQUAMOON^{ATT} with square rosettes

- Chrome
- Platinum Matt



RAINMOON with square rosettes

- Chrome
- Platinum Matt



AQUAMOON with square rosettes

- Chrome
- Platinum Matt

Rainmoon



- Unique rain experience
- Two flow modes: TEMPEST and AQUA CIRCLE
- Preset moonlight
- minimalist design focusing on the special water experience
- Mechanical control via three-way concealed thermostat

Aquamoon



- Individual shower experience
- Three flow modes: TEMPEST, AQUA CIRCLE, QUEEN'S COLLAR
- Preset moonlight
- minimalist design focusing on the special water experience
- Mechanical control via x-Tool

Aquamoon^{ATT}

- AQUAMOON^{ATT} as an electronic version represents the top product concept of the entire AQUAMOON family.
- The shower experience is taken to a new level.
- The effect of water on the body is extended by the sensual experience.
- Smart water and coloured light scenarios create an individual moment of bliss.

Aquamoon^{ATT}

- Four unique flow modes, fascinating light scenarios and fragrance are combined to create an emotional water experience that provides new life energy.
- AQUAMOON^{ATT} is the culmination of a personal feeling of happiness with feelings of relaxation, refreshment or security.
- Flow modes envelop like a protective cocoon. They refresh or put you in an almost meditative state.
- Experience moments of calm and retreat.

Aquamoon^{ATT} - Signature Treatments

- Specially-developed, co-ordinated and preset light and water choreographies - which can be called up and enjoyed fully automatically at the touch of a button.
- SOOTHE
- NURTURE
- EMPOWER

SOOTHE

Full, soft drops of water rain over your body like a tropical downpour, caressing the soul and calming the mind. The slow temperature swing between warm and hot goes almost unnoticed. Intense blue and violet light conjures up the atmosphere of a clear morning sky, combined with the sensuous fragrance of Mediterranean citrus blossom. The scenario brings peace, quietening your stream of thought, and calming your body and mind. The warmth of the water is transferred to your body, transforming it into a therapeutic, almost meditative state.



NURTURE

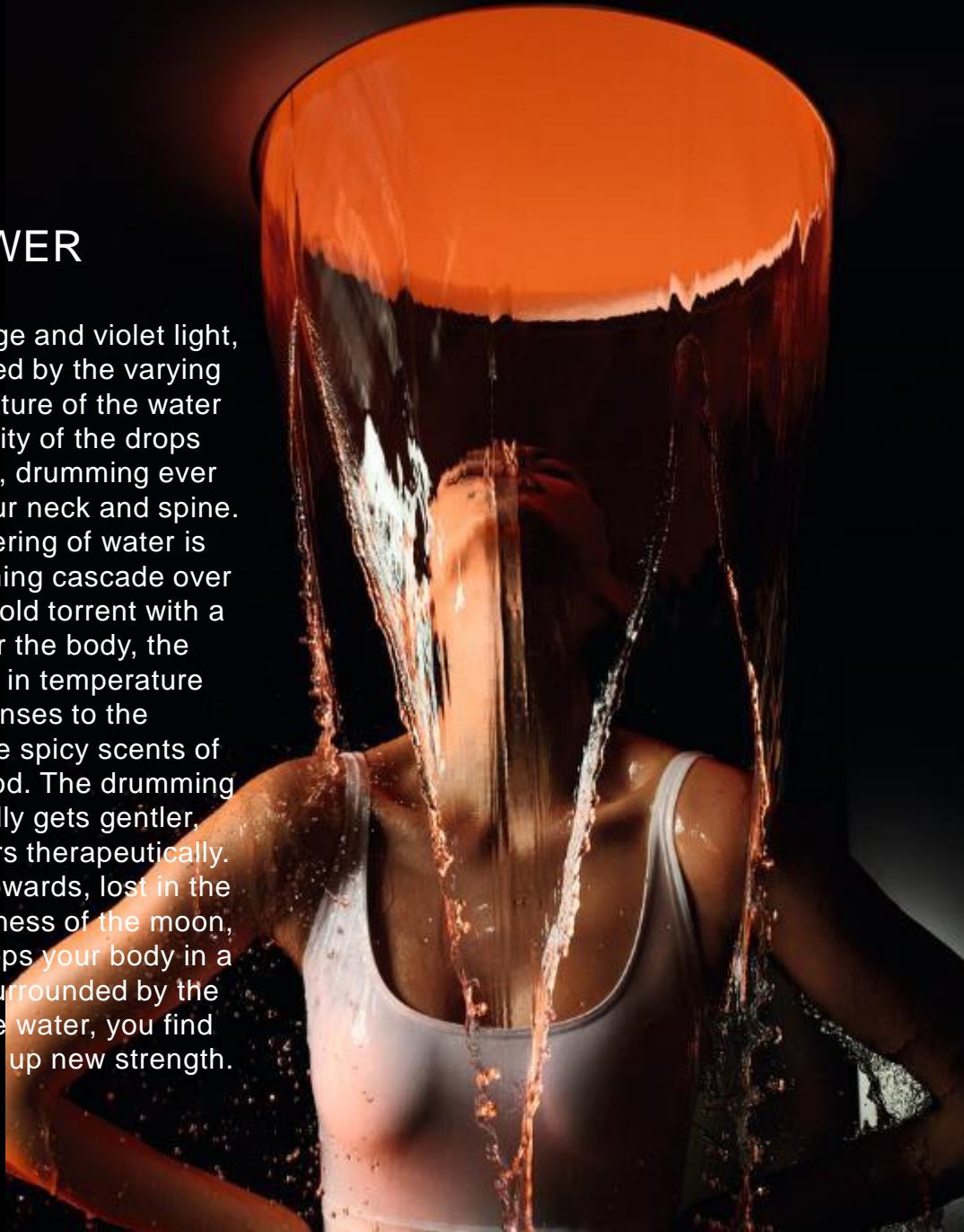
A curtain of water droplets envelops your body, accompanied by the calming blue of the ocean and the powerful green of the rainforest. The rain curtain opens and closes to the pulsating rhythm of your breathing, falling either as a gentle cone to massage your shoulders or intensifying to a concentrated stream of water. The gentle change in temperature from concentrated warmth to a refreshing rain curtain stimulates the circulation, aided by the grounding and nourishing fragrance of bergamot and yuzu. You breathe more deeply as the sickle-shaped cascade of water massages your neck. Your body emerges strengthened and filled with a deep sense of well-being.



EMPOWER

Bathed in vibrant orange and violet light, your body is stimulated by the varying strength and temperature of the water droplets. The intensity of the drops reaches a crescendo, drumming ever more powerfully on your neck and spine.

As a clear, cold covering of water is combined with a warming cascade over the neck and an ice-cold torrent with a warm cascade over the body, the stimulating changes in temperature activate your senses to the accompaniment of the spicy scents of mandarin and rosewood. The drumming of the water gradually gets gentler, stroking your shoulders therapeutically. Your gaze wanders upwards, lost in the fascinating boundlessness of the moon, while the water envelops your body in a protective cocoon. Surrounded by the steady murmur of the water, you find repose – and summon up new strength.





Coloured light

Aquamoon^{ATT} - Fragrance

A special feature of AQUAMOON^{ATT} are the fragrances that are co-ordinated with the Signature Treatments and inspired by the respective weather phenomena and moods in nature.

They are made from high-quality, natural, essential oils, aromas and balms, and underline the beneficial effect of water. A fragrance has been selected for each Signature Treatment (individual control of the fragrances is not possible).



SOOTHE:
Sensual scent of
Mediterranean citrus blossoms



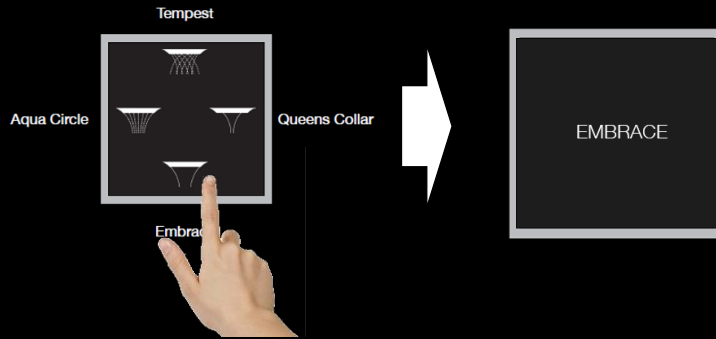
NURTURE:
Earthy, nourishing scent of
bergamot and yuzu



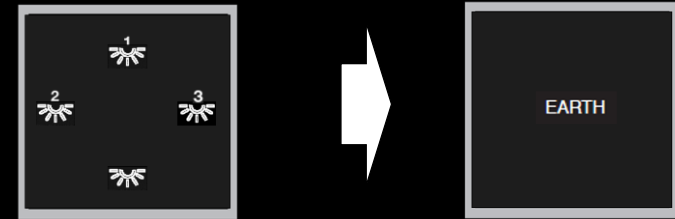
EMPOWER:
Spicy scents of mandarin and
rosewood activate the senses

Aquamoon^{ATT} - Control elements

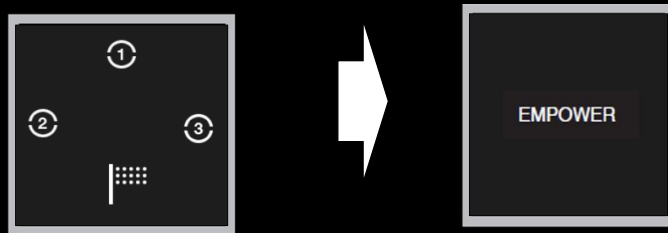
Display button: Flow modes



Display button: Light Treatments



Display button: Signature Treatments



+ 2 rotary knobs: Temperature and volume

Aquamoon^{ATT} factsheet

Designer:	Michael Neumayr Design
Segment:	Spa Solutions
Product range:	Aquamoon ^{ATT}
Design features:	Round, integrated design
Country-specific special features:	None, since no (USA) variant Rainmoon ^{ATT} planned
Finishes:	Ceiling panel: white matt (untreated) Control and accessories: chrome and platinum matt
Variants:	Further RAL colours for the ceiling panel via xtra Service
First presentation:	ISH 2017 (Concept Study) Salone del Mobile 2018, Monaco Yacht Show 2018, Sleep Event 2018 (outlook) ISH 2019 (specifiable)
Pricing:	30,000 EUR
Availability:	BVM/BEM: Q3 2019

Aquamoon - FAQ's

Flow rate of the individual flow modes

- Tempest: 5-10 l/min
- Aqua Circle: 5-12 l/min
- Queen's Collar: 18-24 l/min
- Embrace: max. 60 l/min

- The drainage capacity of the drainage system used should be at least 60 l/min for Aquamoon^{ATT} with Embrace and at least 25 l/min for Aquamoon^{ATT} without Embrace.

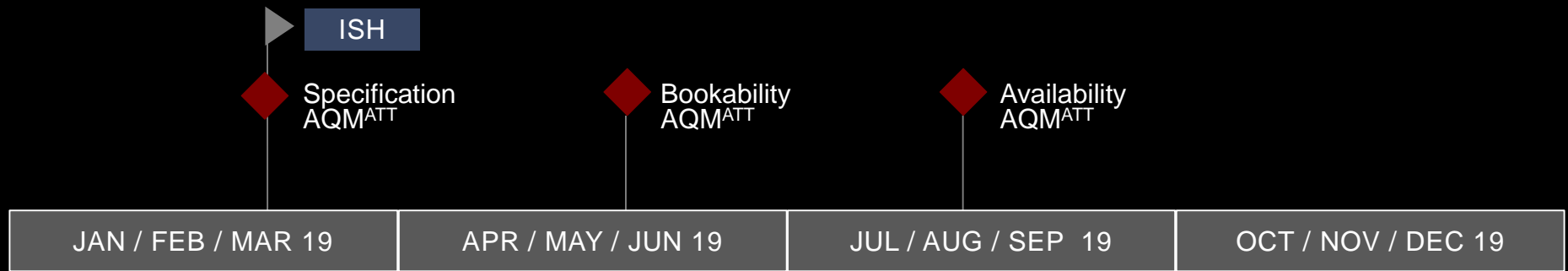
- The ceiling cut-out is Ø1.25 m.

- Dimensions installation box: 1.35 m x 1.35 m x 0.29 m.

- The installation height depends on the height of the user. The distance from the head to the ceiling should not exceed 0.7 m. The recommended installation height is between 2.25 m and 2.5 m.

- Special production of the ceiling panel possible!

Aquamoon - Timing

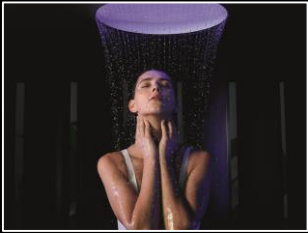


General Content



Visuals

Available from: as of
now





Making-of



Teaser version 1



Teaser version 2



Interview

Films (AQM Family)

Available from: as of
now



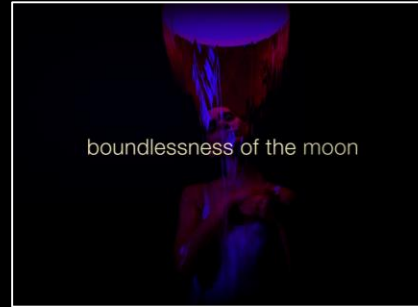
Main Teaser



Treatment SOOTHE



Treatment NURTURE



Treatment EMPOWER

Films (AQM^{ATT})

Available from: as of
now

Architecture Renderings

Available from: as of
now

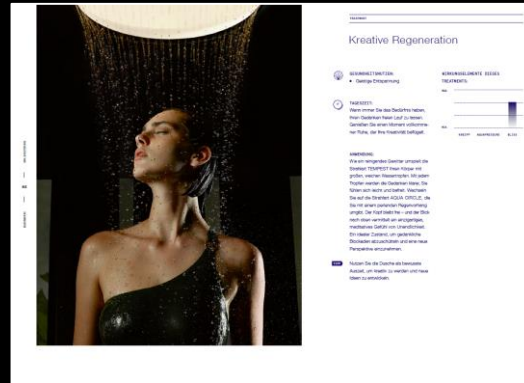
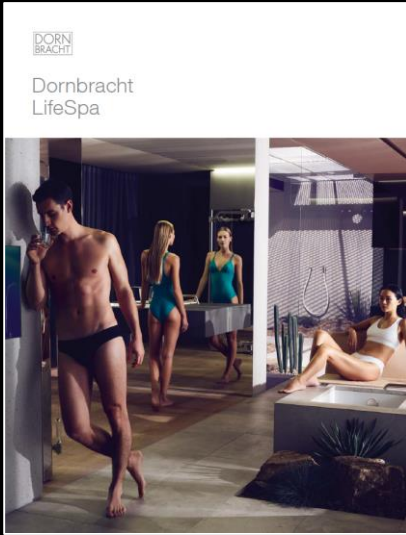


Aquamoon^{ATT}

Aquamoon

Measures & Tools

Available from: as of now



Banners

Available from: tbd



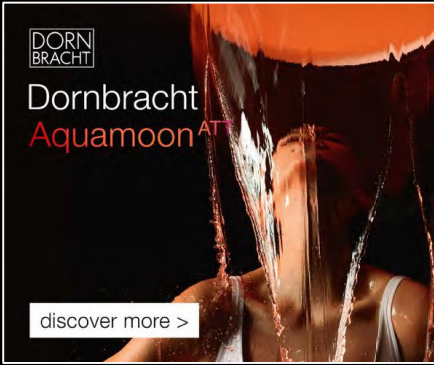
E-Mail Banner



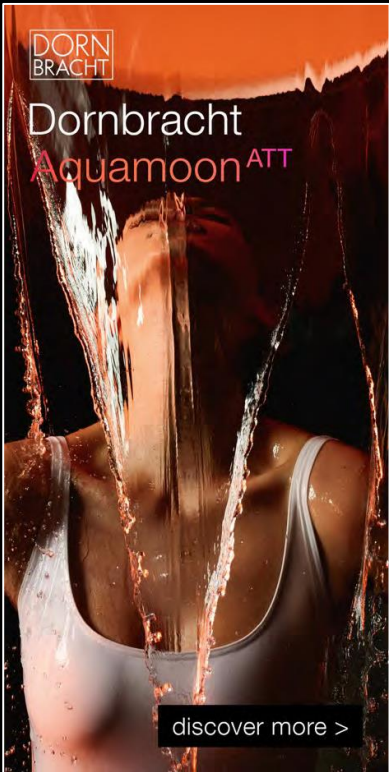
LinkedIn Banner



Billboard



Large Rectangle



Half Page Ad

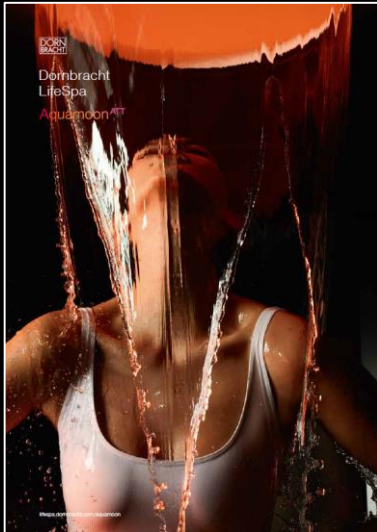


Banners

Available from: tbd



Medium Rectangle



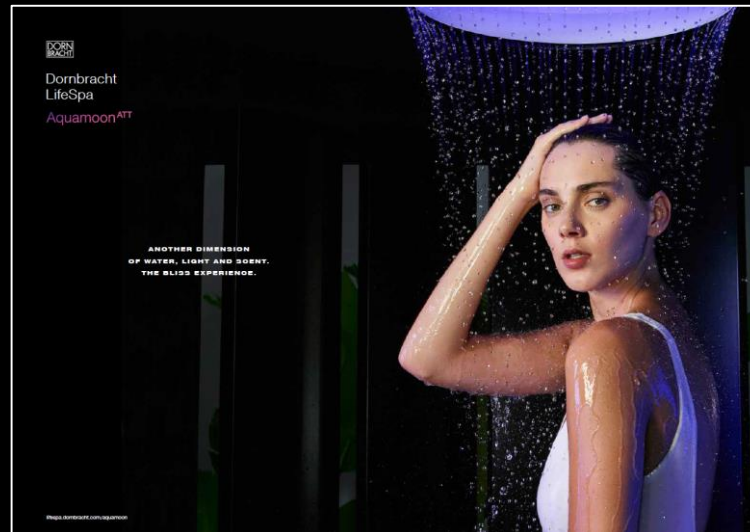
1/1 Advert V1



2/1 Advert V1



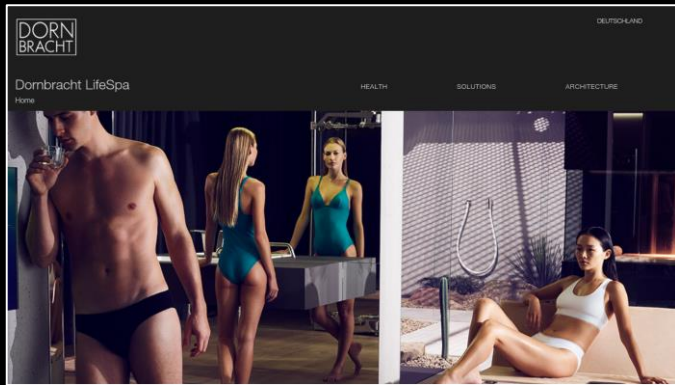
1/1 Advert V2



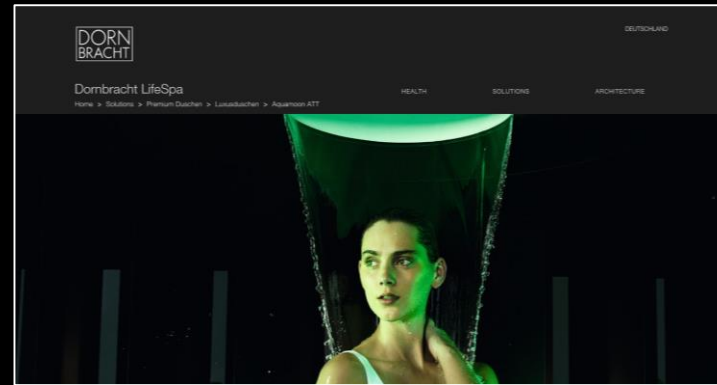
2/1 Advert V2

Channels

LifeSpa Website | AQUAMOON^{ATT} Landingpage



lifespa.dornbracht.com



lifespa.dornbracht.com/aquamoon-att


Dornbracht Group Professional

Dornbracht Group Professional

I am searching for ... → Enter search term or article number (e.g. 22513892-00)

Menu

DEU / deutsch Compare Favorites Specification Registration Log in



Start / Bathroom / Shower Solutions / Aquamoon ATT

Aquamoon^{ATT}

AQUAMOON^{ATT} as an electronic version represents the top of the product concept of the entire AQUAMOON family. In addition to the three flow modes TEMPEST, AQUA CIRCLE and QUEEN'S COLLAR, AQUAMOON^{ATT} is optionally available with the fourth flow mode EMBRACE. Different lighting scenarios (MOON, EARTH and SUN) can be controlled either in combination with the individual flow modes or completely independently of water use. In addition, various signature treatments - specially developed, pre-set light and water choreographies - can be initiated automatically. In combination with the fragrance component additionally integrated into the Signature Treatments and the minimalist design of the dome, the shower experience is raised to a new level.

2 Results

reset all filters

tiles view list view Best accordance

Category: Product

Color

2 Products

Dornbracht
41265979-00 – AQUAMOON^{ATT} Erlebnisduche - chrom
chrom

details →

professional.dornbrachtgroup.com/bad/dusche/aquamoon-att/